

## Simulating the Earth system response to negative emissions

This content has been downloaded from IOPscience. Please scroll down to see the full text.

2016 Environ. Res. Lett. 11 095012

(<http://iopscience.iop.org/1748-9326/11/9/095012>)

View [the table of contents for this issue](#), or go to the [journal homepage](#) for more

Download details:

IP Address: 138.194.17.42

This content was downloaded on 21/09/2016 at 02:17

Please note that [terms and conditions apply](#).

## Environmental Research Letters



## LETTER

## Simulating the Earth system response to negative emissions

## OPEN ACCESS

RECEIVED  
24 March 2016

REVISED  
26 August 2016

ACCEPTED FOR PUBLICATION  
26 August 2016

PUBLISHED  
20 September 2016

Original content from this work may be used under the terms of the [Creative Commons Attribution 3.0 licence](#).

Any further distribution of this work must maintain attribution to the author(s) and the title of the work, journal citation and DOI.



C D Jones<sup>1</sup>, P Ciais<sup>2</sup>, S J Davis<sup>3</sup>, P Friedlingstein<sup>4</sup>, T Gasser<sup>2,5</sup>, G P Peters<sup>6</sup>, J Rogelj<sup>7,8</sup>, D P van Vuuren<sup>9,10</sup>, J G Canadell<sup>11</sup>, A Cowie<sup>12</sup>, R B Jackson<sup>13</sup>, M Jonas<sup>14</sup>, E Kriegler<sup>15</sup>, E Littleton<sup>16</sup>, J A Lowe<sup>1</sup>, J Milne<sup>17</sup>, G Shrestha<sup>18</sup>, P Smith<sup>19</sup>, A Torvanger<sup>6</sup> and A Wiltshire<sup>1</sup>

<sup>1</sup> Met Office Hadley Centre, FitzRoy Road, Exeter, EX1 3PB, UK

<sup>2</sup> Laboratoire des Sciences du Climat et de l'Environnement, CEA CNRS UVSQ, Gif-sur-Yvette, France

<sup>3</sup> Department of Earth System Science, University of California, Irvine, USA

<sup>4</sup> College of Engineering, Mathematics and Physical Sciences, University of Exeter, Exeter EX4 4QE, UK

<sup>5</sup> Centre International de Recherche en Environnement et Développement, CNRS-PontsParisTech-EHESS-AgroParisTech-CIRAD, F-94736 Nogent-sur-Marne, France

<sup>6</sup> Center for International Climate and Environmental Research—Oslo (CICERO), Gaustadalléen 21, NO-0349 Oslo, Norway

<sup>7</sup> Energy Program, International Institute for Applied Systems Analysis, Schlossplatz 1, A-2361 Laxenburg, Austria

<sup>8</sup> Institute for Atmospheric and Climate Science, ETH Zurich, Universitätsstrasse 16, 8092 Zurich, Switzerland

<sup>9</sup> PBL Netherlands Environmental Assessment Agency, The Netherlands

<sup>10</sup> Copernicus Institute for Sustainable Development, Utrecht University, The Netherlands

<sup>11</sup> Global Carbon Project, CSIRO Oceans and Atmosphere Research, GPO Box 3023, Canberra, Australian Capital Territory 2601, Australia

<sup>12</sup> NSW Department of Primary Industries, University of New England, Armidale NSW 2351, Australia

<sup>13</sup> Department of Earth System Science, Woods Institute for the Environment and Precourt Institute for Energy, Stanford University, Stanford, CA 94305, USA

<sup>14</sup> Advanced Systems Analysis Program, International Institute for Applied Systems Analysis, Schlossplatz 1, A-2361 Laxenburg, Austria

<sup>15</sup> Potsdam Institute for Climate Impact Research (PIK), PO Box 60 12 03, D-14412 Potsdam, Germany

<sup>16</sup> University of East Anglia, Norwich Research Park, Norwich NR4 7TJ, UK

<sup>17</sup> Stanford University 473 Via Ortega, Stanford, CA 94305-2205, USA

<sup>18</sup> US Carbon Cycle Science Program, US Global Change Research Program, Washington, DC 20006, USA

<sup>19</sup> Institute of Biological and Environmental Sciences, University of Aberdeen, 23 St Machar Drive, Aberdeen, AB24 3UU, UK

E-mail: [chris.d.jones@metoffice.gov.uk](mailto:chris.d.jones@metoffice.gov.uk)

**Keywords:** climate, carbon cycle, earth system, negative emissions, carbon dioxide removal, mitigation scenarios

Supplementary material for this article is available [online](#)

## Abstract

Natural carbon sinks currently absorb approximately half of the anthropogenic CO<sub>2</sub> emitted by fossil fuel burning, cement production and land-use change. However, this airborne fraction may change in the future depending on the emissions scenario. An important issue in developing carbon budgets to achieve climate stabilisation targets is the behaviour of natural carbon sinks, particularly under low emissions mitigation scenarios as required to meet the goals of the Paris Agreement. A key requirement for low carbon pathways is to quantify the effectiveness of negative emissions technologies which will be strongly affected by carbon cycle feedbacks. Here we find that Earth system models suggest significant weakening, even potential reversal, of the ocean and land sinks under future low emission scenarios. For the RCP2.6 concentration pathway, models project land and ocean sinks to weaken to  $0.8 \pm 0.9$  and  $1.1 \pm 0.3$  GtC yr<sup>-1</sup> respectively for the second half of the 21st century and to  $-0.4 \pm 0.4$  and  $0.1 \pm 0.2$  GtC yr<sup>-1</sup> respectively for the second half of the 23rd century. Weakening of natural carbon sinks will hinder the effectiveness of negative emissions technologies and therefore increase their required deployment to achieve a given climate stabilisation target. We introduce a new metric, the perturbation airborne fraction, to measure and assess the effectiveness of negative emissions.

## 1. Introduction

In the recently adopted UN Paris Agreement on climate change, countries agreed to focus international

climate policy on keeping global mean temperature increase well below 2 °C above pre-industrial levels and pursue actions to further limit warming to 1.5 °C (UNFCCC 2015). Scenarios consistent with such

targets typically require large amounts of carbon dioxide removal (Clarke *et al* 2014, Gasser *et al* 2015, Rogelj *et al* 2015), achieved by deliberate human efforts to remove CO<sub>2</sub> from the atmosphere. Negative emissions technologies (NETs) are therefore present in the majority of scenarios that give a more than 50% chance of limiting warming to below 2 °C (Fuss *et al* 2014) and all scenarios that give more than a 50% chance of staying below 1.5 °C (Rogelj *et al* 2015).

In low emission pathways, the presence of NETs offsets continued positive emissions from fossil fuels and land-use change to strongly reduce the anthropogenic input into the atmosphere. In some cases it even reverses the sign so that the effect of human activity is a net flow out of the atmosphere ('net negative emissions'). Gasser *et al* (2015) stress the need to separately quantify the magnitude of continued positive emissions and the amount of carbon removed by negative emission technologies.

Fuss *et al* (2014) called for renewed efforts to develop a consistent and comprehensive narrative around NETs and the need to develop a framework for examining implications of NETs in a wider context. Smith *et al* (2016) reviewed costs and biophysical limits associated with different NET technologies. Research into NETs needs to address both demand-side (how much NETs are required?) and supply-side (how much NETs are possible?) questions. This paper specifically explores the Earth system responses to different amounts of negative emissions. Understanding of the behaviour of natural carbon sinks is crucial to quantify the demand for NETs to achieve climate targets.

Although the natural carbon cycle is now commonly represented in Earth system models (ESMs), there has been little specific analysis of the behavior of different components of the carbon cycle when forced by net negative emissions. Previous analysis of CMIP5 ESMs has shown that approximately half of the models require globally net negative emissions for CO<sub>2</sub> to follow the RCP2.6 pathway (Jones *et al* 2013). Tokarska and Zickfeld (2015) used an ESM of intermediate complexity to simulate the response to a range of future NET scenarios. It is known that redistribution across natural carbon stocks weakens the effect of negative emissions on atmospheric CO<sub>2</sub> (see e.g. Cao and Caldeira 2010, Matthews 2010, Ciais *et al* 2013, MacDougall 2013). Reducing the amount of CO<sub>2</sub> in the atmosphere reduces the natural carbon sinks due to the fact that vegetation productivity will decrease when CO<sub>2</sub> decreases and that ocean CO<sub>2</sub> uptake will also decrease with decreasing CO<sub>2</sub>.

In this paper, we assess the impact on the global carbon cycle across different time horizons and consider different balances of emissions and fluxes, and how the natural carbon cycle responds. For this, we use, for the first time, CMIP5 model simulations to quantify how the Earth system may respond to NETs, and how this response may depend on the state of the climate and the background scenario.

We stress the need to know *quantitatively* what happens to this redistribution of carbon under specific scenarios in order to both plan the requirement for NETs, and to understand their effectiveness and any implications or side effects. Despite the fact that they lack some important processes such as permafrost carbon, process-based and spatially explicit ESMs remain an essential tool for this exploration. Reducing uncertainty in projected carbon sinks behaviour, especially under low emissions scenarios, is a pressing research priority.

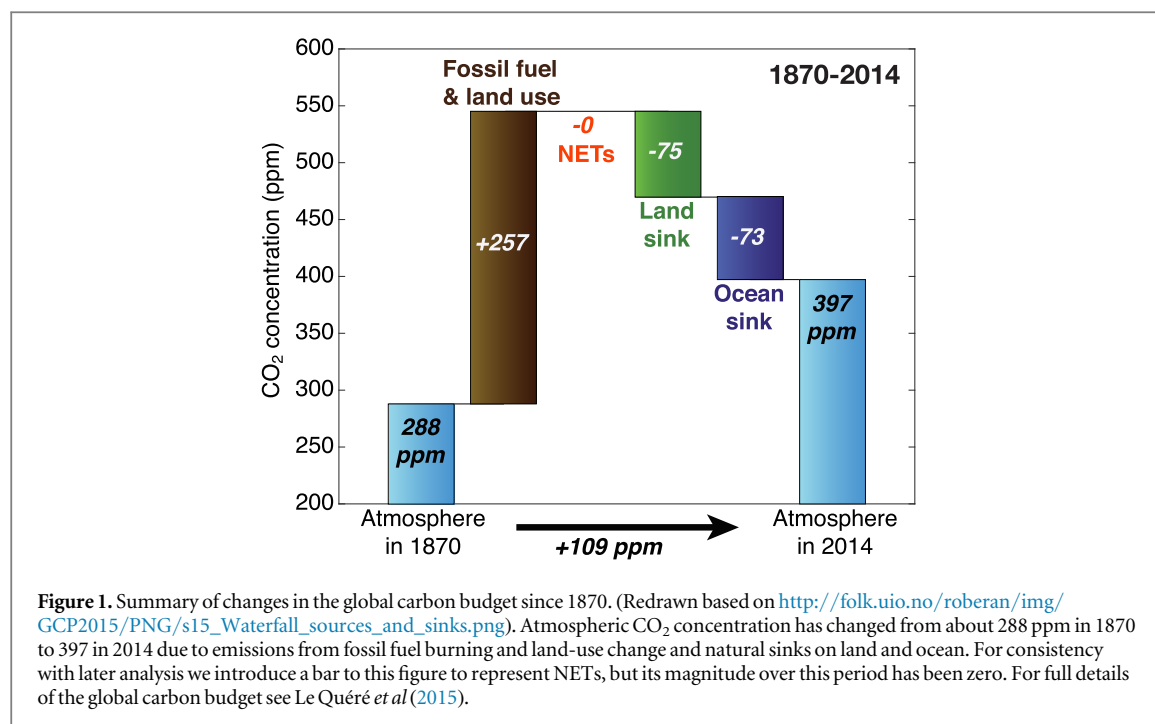
Section 2 of this paper draws on existing CMIP5 ESM simulations of the RCP2.6 scenario, extended to 2300 with sustained global negative emissions, and section 3 makes use of a simple climate-carbon cycle model to explore the scenario dependence of the response of carbon sinks to negative emissions.

## 2. Earth system response over time

The contemporary carbon cycle can be summarised at a global scale: human activity puts CO<sub>2</sub> into the atmosphere, natural sinks remove about half of those emissions and the remainder accumulates in the atmosphere such that atmospheric CO<sub>2</sub> concentrations increase (figure 1). Since pre-industrial times, human activity has always resulted in net positive emissions to the atmosphere, leading to an increase of atmospheric CO<sub>2</sub> concentration, from about 288 to 400 ppm over the last 150 years or so. Natural ecosystems, both land and oceans, have been persistent sinks of CO<sub>2</sub> (Le Quéré *et al* 2015). We will build on figure 1 throughout this paper to depict schematically how the carbon cycle responds to carbon dioxide removal.

Different types of anthropogenic activity have different effects on the Earth system and carbon pools. Figure 2 shows schematically how each pool is affected by direct anthropogenic activity and subsequent redistribution between pools. We restrict consideration here to those carbon pools which respond on time-scales up to a few centuries. By this we mean the atmosphere; the land vegetation and near surface (top metre or so) soil organic matter but not deep permafrost or geologically stored carbon; and the ocean store of dissolved (organic or inorganic) carbon and biomass in various forms of plankton, but not ocean sediments.

Land-use change, mainly in the form of deforestation, was the first major human perturbation to the carbon cycle (Le Quéré *et al* 2015). Its net result was to move carbon from the land pool (L) to the atmosphere (A) (shown in figure 2(a)). Over time, natural sinks redistributed part of this additional carbon in the atmosphere between the other pools. Atmospheric CO<sub>2</sub> (A) increases, but the total mass of carbon (A+L+O) is not changed.



Since about 1950, the burning of fossil fuel represents a larger source of CO<sub>2</sub> to the atmosphere than land-use change and this has a different effect on the carbon cycle (figure 2(b)) because carbon originating from a separate reservoir is introduced, firstly to the atmosphere and subsequently partly redistributed between the land and ocean. A major difference from land-use emissions is that the total amount of carbon in the atmosphere-land-ocean system increases. This is depicted in figure 2 by an increased size of the pie chart in row b relative to the original size, shown by the dotted circle.

Figure 2 then shows two possible ways of obtaining carbon-neutral energy. The first is through use of bioenergy (figure 2(c)) whereby carbon is first drawn down from the atmosphere by vegetation growth and stored in biomass (arrow '1' in figure 2(c)) before this biomass is burned to release energy, releasing the stored carbon back to the atmosphere (arrow '2' in figure 2(c)). We note that the drawdown of carbon into vegetation may have occurred many years prior to the burning of the fuel, and so the concept of bioenergy being carbon neutral is not necessarily true on short timescales (Cherubini *et al* 2011). The fourth row in figure 2 then shows how fossil fuel can be burned, but can be brought to being approximately carbon neutral by using carbon capture and storage technology (CCS). In reality not all the carbon will be captured (IPCC 2005, Benson *et al* 2012), and some may escape during the capture, transport and ultimate storage processes, but conceptually the figure captures the intention of CCS to enable low-carbon fossil fuel use.

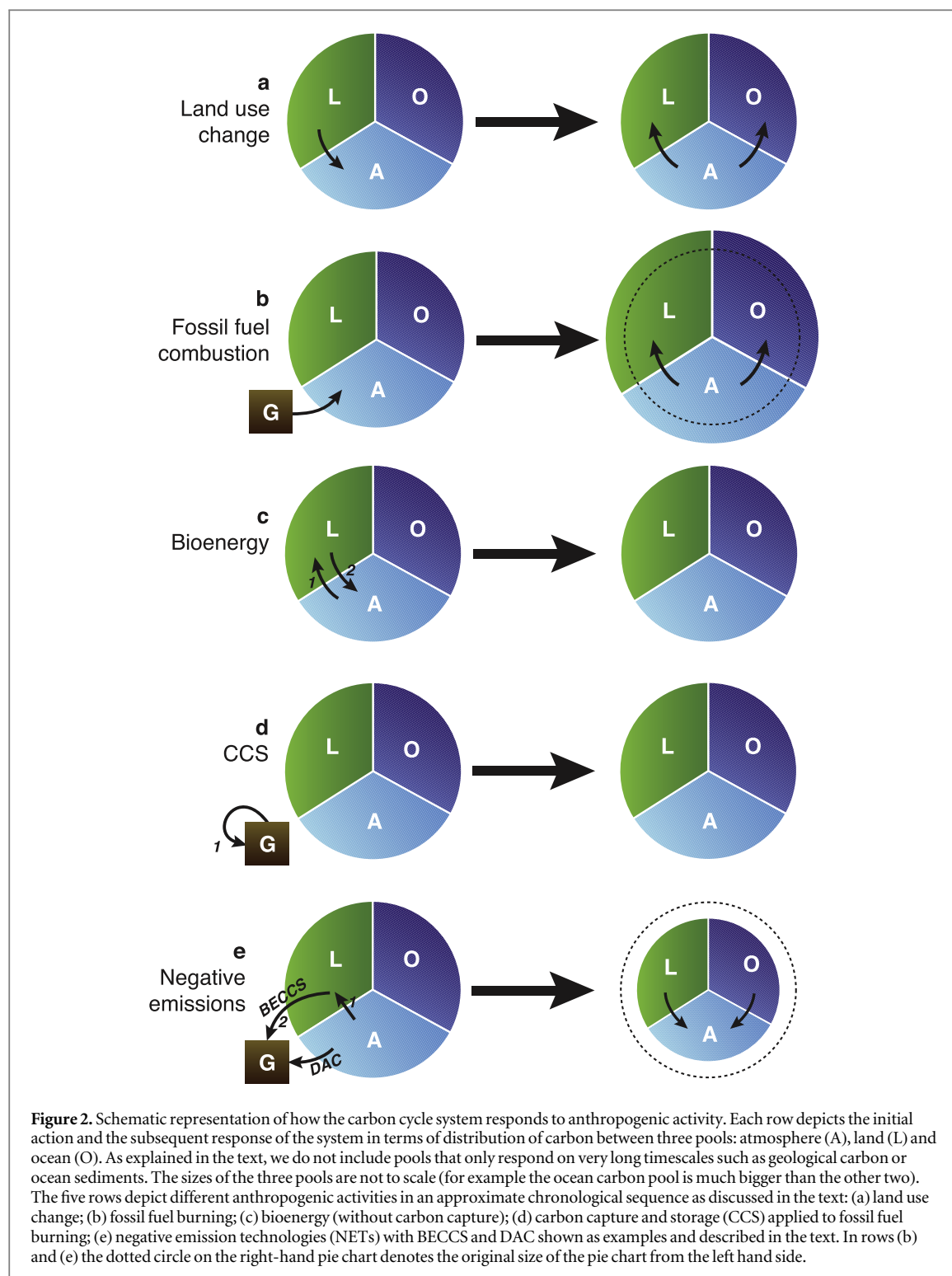
Now we consider the role of NETs. If CO<sub>2</sub> is removed from the atmosphere and stored in land vegetation and soils (e.g. by afforestation) then the

total amount of carbon (A+L+O) does not change and in the context of this figure, this is just a form of land-use change. However, if the NET employed stores the carbon in a geological formation (or deep ocean or inert soil pool), as depicted in figure 2(e), then the size of the active carbon cycle is reduced (smaller pie chart in row e). The figure shows two specific activities: bioenergy with carbon capture and storage (BECCS) removes carbon from the atmosphere via the land (arrows 1 and 2) whereas direct air capture removes it directly from the atmosphere. Other NETs could also be depicted in a similar way but we show just two here for clarity. In the same way that additions to the atmosphere lead to redistributions of carbon to land and ocean, removal from the atmosphere also leads to redistribution between the three pools (Cao and Caldeira 2010).

## 2.1. Research questions

All these anthropogenic activities have substantially different effects on the Earth system, but one common theme (except for CCS in an idealised case) is the redistribution of carbon between reservoirs, which continues for some time after the initial activity. For all actions depicted in figure 2, the long-term response (in the right hand columns) differs from the immediate effect shown in the left-hand column. In order to understand the impact of any action we need to quantitatively understand how this redistribution will operate at the process level. The natural carbon sinks that drive this redistribution are affected by the prevailing climate and CO<sub>2</sub> concentration and also historical changes in their environmental conditions.

In scenarios where CO<sub>2</sub> growth slows and CO<sub>2</sub> concentration either stabilizes, or even peaks and



declines, then natural sinks may behave rather differently than currently where concentration is always on the rise. The airborne fraction of emissions (AF) has been approximately constant for many decades now but this is not a fundamental behaviour of the Earth system, but largely a result of near-exponential growth in carbon emissions (Raupach 2013, Raupach *et al* 2014). AF may change markedly in the next century dependent on the scenario of anthropogenic emissions. Jones *et al* (2013) showed strong changes in

the land and ocean uptake fraction for the 21st century compared with the 20th century. Beyond 2100, we may expect further changes and qualitatively different behaviour of the land and ocean sinks.

Long simulations using ESMs provide a quantitative understanding of the multiple trade offs and competing factors within the Earth system. Here we explore a case study of RCP2.6 (van Vuuren *et al* 2011) using simulations from CMIP5 ESMs. This scenario is the only high mitigation scenario that has been



**Table 1.** List of models and modelling centres contributing to CMIP5 whose data has been used for this analysis. In terms of their climate and carbon cycle response under RCP2.6, these models represent a reasonable span of model spread from the CMIP5 ensemble (see the supplementary information or for example figure 6(b) of Jones *et al* 2013).

| Modelling centre   | Model name   |
|--|--------------|
| Canadian Centre for Climate modelling and analysis (CCCma) | CanESM2      |
| Met Office Hadley Centre (MOHC)                            | HadGEM2-ES   |
| Institut Pierre-Simon Laplace (IPSL)                       | IPSL-CM5A-LR |
| Max Planck Institute for Meteorology (MPI-M)               | MPI-ESM-LR   |

simulated by multiple ESMs—it shows emissions peaking at just over 10 GtC yr<sup>-1</sup> in 2020, then declining, becoming net negative during the 2080s. The reduction in global emissions is driven partly by reduced fossil fuel use and partly by the introduction of BECCS as early as 2020. The total NETs deployed during the 21st century is much bigger than the amount of global net negative emissions after 2080. An extension to the scenario exists which assumes constant emissions (of -0.42 GtC yr<sup>-1</sup>) from 2100 until 2300 (Meinshausen *et al* 2011).

Here we look at the available CMIP5 models (table 1) which extended their simulations up to 2300. A fifth model, BCC-CSM1.1, also performed this simulation, but without land-use change as a forcing of the land carbon cycle meaning that its land carbon response is therefore very different from the other models (see figure 2(a) of Jones *et al* 2013) and so we do not include it here.

## 2.2. Results

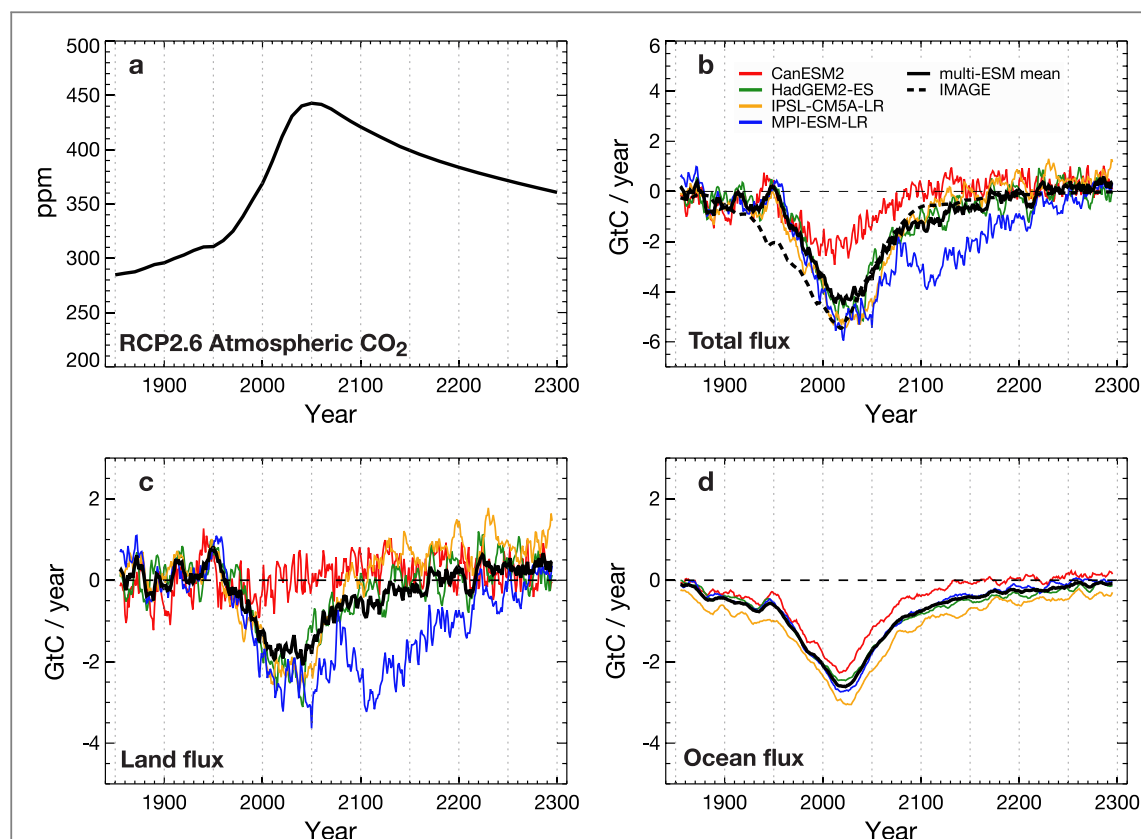
In this section we present the results following a narrative beginning with anthropogenic emissions and leading through to the simulated land and ocean sinks and their resulting effect on atmospheric CO<sub>2</sub>. The methods section of the supplementary information explains how we derive these results from the CMIP5 concentration-driven simulations and how we construct the figures shown here. We start by showing the RCP2.6 CO<sub>2</sub> pathway and the simulated land and ocean carbon fluxes by the 4 ESMs as well as the IMAGE integrated assessment model which generated the RCP2.6 scenario (figure 3).

The emissions, CO<sub>2</sub> concentration and simulated response of land and ocean sinks are detailed in table S1. The behaviour of the simulated carbon sinks is as expected from figure 1; as anthropogenic emissions increase (not shown), natural sinks increase to absorb approximately half of this, and therefore atmospheric CO<sub>2</sub> increases. For comparison, the MAGICC calculations (Meinshausen *et al* 2011) have been added in figure 3(b), showing consistent results. This provides confidence that IAM calculations (using MAGICC) are able to simulate similar dynamics over time to the current state-of-the-art descriptions of the carbon cycle in ESMs.

During the 21st century, anthropogenic NETs along with other mitigation activities come into play in the scenario and gradually reduce and eventually reverse anthropogenic total input from strong positive emissions to weak positive and then a global negative emission. The land and ocean sinks do not respond to the instantaneous emission rate but to the history of the land and ocean carbon reservoirs and level of atmospheric CO<sub>2</sub> and climate change above pre-industrial levels. To illustrate this clearly we analyze the simulations in 50 year sections and calculate the multi-model mean response. Figure 4 shows quantitatively the balance between the various components as they evolve in time:

- 2000–2050. The application of NETs begins but anthropogenic activity remains dominated by positive emissions (figure 4(a)). Land and ocean sinks persist. The AF remains close to half of emissions and CO<sub>2</sub> concentration continues to rise.
- 2050–2100. Fossil fuel emissions decline and NETs grow further in this scenario. The anthropogenic total is still positive but much smaller (figure 4(b)). Natural sinks persist—a little reduced but still absorbing carbon due to past history and therefore CO<sub>2</sub> begins to decrease, despite the anthropogenic total still being positive.
- 2100–2150. NETs exceed fossil inputs and human activity removes more CO<sub>2</sub> than it emits at a global scale (figure 4(c)). During this first 50 years of anthropogenic net carbon removal, the natural sinks weaken significantly due to the rapid decrease in atmospheric CO<sub>2</sub>. Hence there is an atmospheric CO<sub>2</sub> reduction due to the combination of net negative anthropogenic emissions and land and ocean still absorbing carbon, however not as strong as might have been expected if strong natural sinks had persisted.
- 2150–2200 and on to 2250. Behaviour is qualitatively similar to figure 4(c), but now natural sinks have weakened further and CO<sub>2</sub> decrease is slowed. Towards 2250 natural sinks are all but gone. In fact 3 out of 4 ESMs simulate a reversal of the land carbon sink to become a source.
- 2250–2300. In the final stage the land and ocean system has become a net source of CO<sub>2</sub>. Most ESMs still simulate the ocean as a sink, but the overall (land plus ocean) flux is positive (figure 4(d)). The atmospheric CO<sub>2</sub> decrease is weakened as the natural carbon cycle is releasing carbon to the atmosphere, working in the opposite direction to the anthropogenic removal via NETs.

In summary, these results show a clear succession of events: from 2000 to 2050 the emergence of NETs has a slowing effect on anthropogenic emission but the



**Figure 3.** RCP2.6 scenario and CMIP5 simulated carbon fluxes. (a) RCP2.6 CO<sub>2</sub> concentration pathway; (b) total (land plus ocean) carbon flux from CMIP5 ESMs; (c) and (d) land and ocean fluxes separately. Four CMIP5 ESMs were used (listed in table 1) and results are shown as 10 year smoothed fluxes. The black line shows the multi-ESM mean and the dashed black line in (b) shows the MAGICC results for the RCP2.6 scenario (used by the IMAGE IAM in creating RCP2.6). The sign convention is to plot the land and ocean as positive for a flux to the atmosphere and negative to represent a sink. Vertical dotted lines show 50 year time periods used to aggregate results discussed in the text.

general balance is not changed from the historical period; from 2050 to 2100 natural sinks outweigh (still positive) anthropogenic emissions and CO<sub>2</sub> begins to fall; from 2100 to 2250 NETs exceed fossil emissions and human activity is a global negative emission; finally, from 2250 to 2300 natural sinks saturate and reverse and oppose any further removal.

### 3. State and scenario dependence of the Earth system response

We know that natural carbon sinks and the AF of emissions are sensitive to climate change and behave differently under different future scenarios. It is therefore important to understand how the effectiveness of NETs may also differ depending on the scenario against which they are applied. In this section we look at the range of Earth system responses to different levels of negative emissions when applied under different climate and CO<sub>2</sub> scenarios.

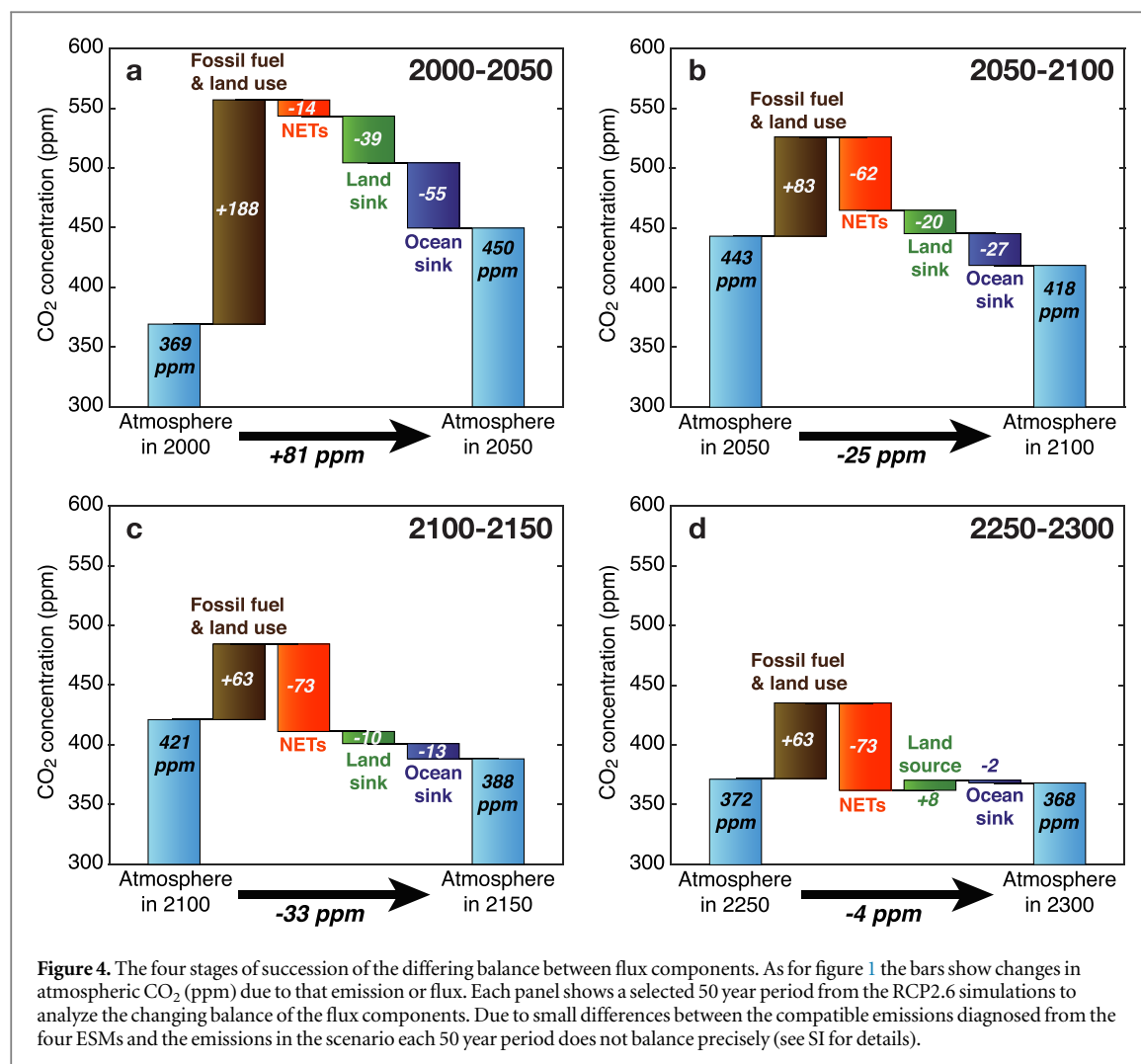
To this end we perform new simulations as perturbations to the RCP set of projections. Using the Hadley Centre Simple Climate-Carbon Model widely used in previous studies (Jones *et al* 2003, 2006, House *et al* 2008, Huntingford *et al* 2009—see SI for more details) we quantify the effect of the level of past

emissions and climate change on the effectiveness of different levels of NETs.

We take each of the four RCP emissions scenarios as a baseline and apply on top of them four idealised scenarios of additional negative emissions (figure 5(a)). The negative emissions scenarios we impose all begin in 2020 and comprise:

- (a) Constant removal of 1 GtC yr<sup>-1</sup>.
- (b) Constant removal of 4 GtC yr<sup>-1</sup>.
- (c) A linear increase in removal from 1 GtC yr<sup>-1</sup> in 2020 up to 4 GtC yr<sup>-1</sup> in 2080 followed by sustained 4 GtC yr<sup>-1</sup> removal until 2100.
- (d) The same as (c) but reversed in time to remove 4 GtC yr<sup>-1</sup> from 2020 to 2040 and then gradually reduce the removal rate to 1 GtC yr<sup>-1</sup> by 2100.

The total CO<sub>2</sub> removal for the 2020–2100 period under these idealised scenarios is 80 and 320 GtC under the first two and 230 GtC for the last two. The idealised NET profiles are added to the four RCP emissions scenarios (figure 5(b)). The simple model is run in emissions-driven configuration taking these emissions as input and simulating the response of natural



sinks and atmospheric CO<sub>2</sub> concentration (figure 5(c)). Here we explore the effect of the applied negative emission and to what extent the Earth-system response depends on the magnitude or time profile of the NET or the state or scenario of background climate and CO<sub>2</sub>.

Figure 5(c) shows the obvious result that with additional NETs applied to each scenario, the simulated CO<sub>2</sub> is reduced. But the degree of reduction varies significantly between scenarios. For example, the same 320 GtC removal results in reduced atmospheric CO<sub>2</sub> by 178, 211, 237 and 274 GtC for RCP2.6 to RCP8.5 respectively. It is clear that the effectiveness of negative emissions varies depending on the scenario and the state of the Earth system. It is therefore desirable to define a new metric that can measure this dependence.

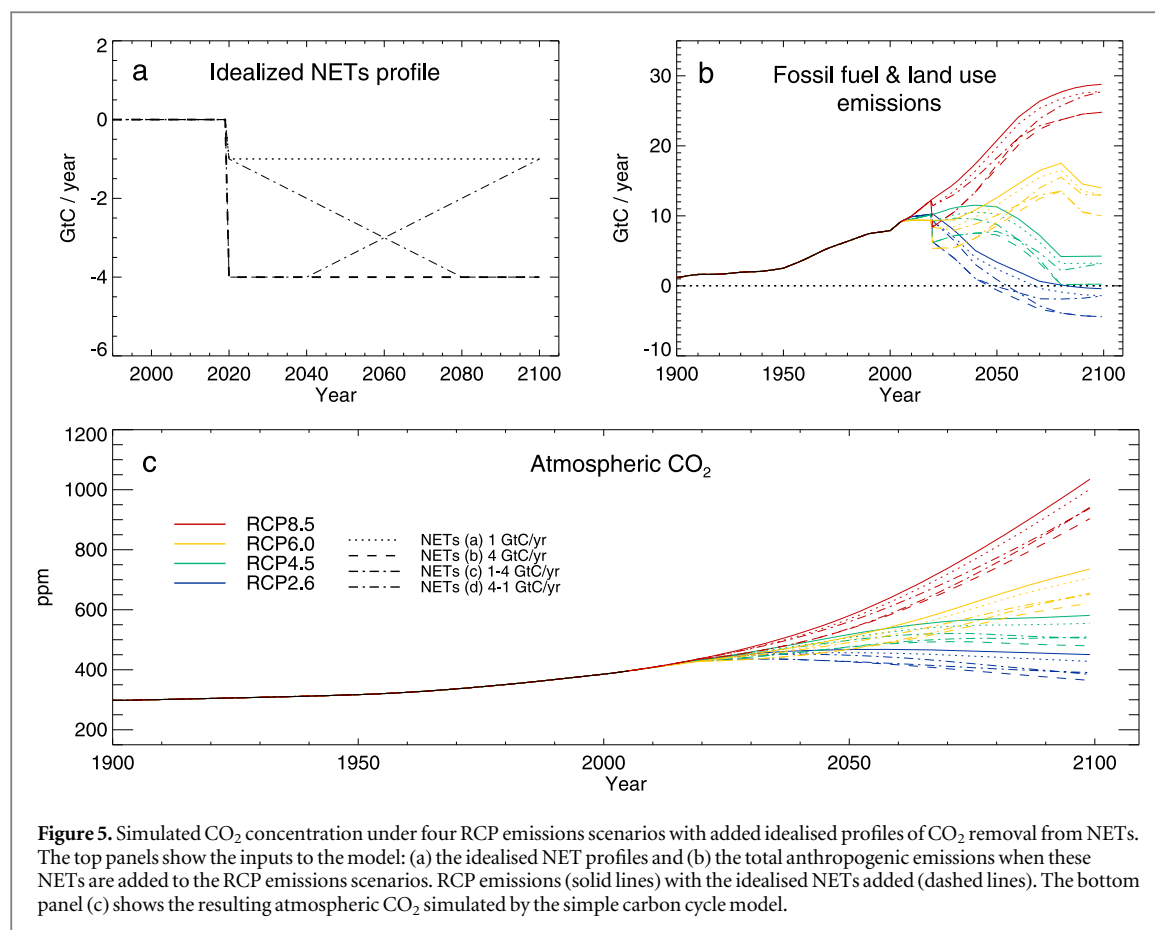
The AF is a commonly used metric and we adopt it here to allow a first analysis of the results. It can be defined as an instantaneous value as the ratio of a single year rise in CO<sub>2</sub> divided by that year's emissions, or a long-term cumulative quantity defined as the change over many years of CO<sub>2</sub> divided by the cumulative emissions over that period. When considering either

emissions close to zero or CO<sub>2</sub> changes that can change sign, then the former definition is not always well behaved or well defined, and so we adopt the latter definition (hereafter named the cumulative airborne fraction, CAF).

Table 2 shows the cumulative emissions and their impact on atmospheric CO<sub>2</sub> for the scenarios with and without added negative emissions over the 80 year period from 2020–2099. The table shows the CAF for the un-modified RCP scenarios, and then also for each modified scenario. A detailed derivation of the terms shown in table 2 is given in the supplementary information.

The CAF of the original RCP scenarios varies markedly across RCPs, with RCP2.6 having a small fraction of cumulative emissions remaining in the atmosphere for the 2020–2099 period (only 15%) while the other RCPs have a higher fraction of cumulative emissions remaining in the atmosphere, ranging from 48% for RCP4.5 to 72% for RCP8.5 (column 7 in table 2, and see SI text and figure S3). This is consistent with previous studies (Ciais *et al* 2013, Jones *et al* 2013). When we look at the CAF under the modified scenarios (column 8) we find two things. For





RCP2.6 the values vary hugely between the three additional NET scenarios (figure S3e). This is because either or both the cumulative emissions or the change in atmospheric CO<sub>2</sub> are negative and this leads to changes in sign of CAF and values greater than one because the denominator in the definition is small. For RCP6 and RCP8.5 (and to some extent for RCP4.5) we find an opposite result—the CAF is rather insensitive to the CO<sub>2</sub> removal and stays close to the value from the un-modified scenario. In either case this metric therefore is not very useful as a measure of either the effect of the negative emission on the Earth system or of the Earth system on the negative emission.

We also calculate the fraction of the CO<sub>2</sub> removal which has remained out of the atmosphere—i.e. the AF of the negative emission (final column of table 2; figure S3 panels m–p). For each RCP this metric is rather insensitive to the amount of removal and is different from (and generally bigger than) the CAF of the RCP itself for the same period. This means that the effect of NETs on atmospheric CO<sub>2</sub> in the long term is more closely controlled by the background scenario and level of climate change than by the amount of NETs themselves. Comparing the ramped removals with different time profiles of the same cumulative amount we see that the response is not strongly affected by the removal pathway. Tokarska and Zickfeld (2015) also calculated a CAF of their carbon removal

and found it to be less dependent on the amount of removal than a CAF based on total emissions. Here we have shown that this property applies across the full range of RCP scenarios. We argue that this perturbation AF (PAF) is therefore a more suitable metric to assess the efficiency of NET than the CAF of the emissions from a single simulation.

This result has several significant implications. Firstly, that it is meaningful to define an AF of a perturbed emission on top of a background scenario in order to measure the effect on atmospheric CO<sub>2</sub> of the additional emission or removal. Secondly, this PAF is not the same as the AF of the background scenario itself. Hence, if it is desired to calculate the effect of adding or removing an amount of carbon on top of an existing scenario, then knowing the AF of the scenario does not help—one must calculate the AF of the extra carbon removed instead, i.e. the PAF. Thirdly, though, the PAF from a given scenario is rather insensitive to the magnitude and timing of additional emission. This may be expected when the additional emission is a small fraction of the total emitted carbon for the scenario, but it appears to hold here too even for RCP2.6 when the total carbon removal is bigger than the cumulative emission in the underlying scenario. This means that once a PAF has been calculated relative to a scenario it can be approximately applied to other perturbations about that scenario to estimate their eventual impact.

**Table 2.** Cumulative emissions and changes in atmospheric CO<sub>2</sub> for the simple model simulations of the original and modified RCPs with additional NET scenarios added. The cumulative airborne fraction (CAF) is calculated for the scenarios and also just for the NET components as described in the text.\* The definition and calculation of these metrics is explained in more detail in the SI.

| RCP scenario   | Idealised NET profile/GtC yr <sup>-1</sup> | RCP cumulative emission (2020–2099)/GtC | Cumulative additional NE/GtC | Cumulative total emission (2020–2099)/GtC | Change in atmospheric CO <sub>2</sub> /GtC | CAF of back-ground RCP* (2020–2099) | CAF of modified RCP* with NET (2020–2099) | Perturbation-AF of the additional negative emission* |
|----------------|--|---|------------------------------|---|--|-------------------------------------|---|--|
| <b>RCP2.6</b>  |  | <b>243</b>                              |                              |   | <b>37</b>                                  | <b>0.15</b>                         |   |  |
|                | –1   |   | –80                          | 163                                       | –10  |                                     | –0.06                                     | 0.6  |
|                | –4   |   | –320                         | –77                                       | –141                                       |                                     | 1.83                                      | 0.57   |
|                | –1 to –4                                   |   | –230                         | 13  | –101                                       |                                     | –7.8                                      | 0.6  |
|                | –4 to –1                                   |   | –230                         | 13  | –86  |                                     | –6.6                                      | 0.55   |
| <b>RCP 4.5</b> |  | <b>663</b>                              |                              |   | <b>316</b>                                 | <b>0.48</b>                         |   |  |
|                | –1   |   | –80                          | 583                                       | 261  |                                     | 0.45                                      | 0.7  |
|                | –4   |   | –320                         | 343                                       | 105  |                                     | 0.3                                       | 0.67   |
|                | –1 to –4                                   |   | –230                         | 433                                       | 155  |                                     | 0.35                                      | 0.7  |
|                | –4 to –1                                   |   | –230                         | 433                                       | 169  |                                     | 0.39                                      | 0.66   |
| <b>RCP 6.0</b> |  | <b>1060</b>                             |                              |   | <b>649</b>                                 | <b>0.61</b>                         |   |  |
|                | –1   |   | –80                          | 980                                       | 588  |                                     | 0.6                                       | 0.78   |
|                | –4   |   | –320                         | 740                                       | 412  |                                     | 0.55                                      | 0.75   |
|                | –1 to –4                                   |   | –230                         | 830                                       | 470  |                                     | 0.56                                      | 0.78   |
|                | –4 to –1                                   |   | –230                         | 830                                       | 483  |                                     | 0.58                                      | 0.74   |
| <b>RCP 8.5</b> |  | <b>1764</b>                             |                              |   | <b>1265</b>                                | <b>0.72</b>                         |   |  |
|                | –1   |   | –80                          | 1684                                      | 1195                                       |                                     | 0.71                                      | 0.89   |
|                | –4   |   | –320                         | 1444                                      | 991  |                                     | 0.68                                      | 0.87   |
|                | –1 to –4                                   |   | –230                         | 1534                                      | 1061                                       |                                     | 0.69                                      | 0.89   |
|                | –4 to –1                                   |   | –230                         | 1534                                      | 1071                                       |                                     | 0.70                                      | 0.86   |

## 4. Conclusions

Other studies have outlined various socio-economic costs, biophysical limits and implications of different NETs (Fuss *et al* 2014, Smith *et al* 2016, Williamson 2016). Here we have shown how NETs interact with the physical climate-carbon cycle system. Our analysis of the Earth system response to negative emissions has provided new insights and identified future research priorities.

Our results contribute to the need to quantify the interactions between the climate, carbon cycle and anthropogenic NETs in determining future redistribution of carbon between atmosphere, land and ocean reservoirs. By viewing the scenarios and the evolution of carbon sinks and sources in a sequence of phases we have revealed qualitatively different behaviour of the Earth system at different points in time. The combined effect of anthropogenic and natural sources and sinks can change over time, sometimes resulting in positive and sometimes negative changes in atmospheric CO<sub>2</sub> concentration. The behavior of atmospheric CO<sub>2</sub> is not predictable from the instantaneous anthropogenic emission alone, but requires knowledge of past emissions and Earth system state. For example, CMIP5 simulations following the RCP2.6 pathway to 2300 exhibited periods where atmospheric CO<sub>2</sub> decreased despite ongoing net positive emissions from anthropogenic activity. Conversely, later in the scenarios, natural sinks weakened and even reversed, especially on land, and offset the effects of globally negative anthropogenic emissions.

We found significant state-dependence of the Earth system behaviour in response to NETs. Our results showed that the effect of NETs on atmospheric CO<sub>2</sub> is more closely controlled by the background scenario and level of climate change than by the amount or timing of NETs themselves. We propose a new metric, the PAF, defined as the ratio of CO<sub>2</sub> reduction to the amount of NETs applied. This metric can be used to transfer model results that quantify the effect of NETs under a given scenario to estimate the effect of different levels of NETs against the same scenario.

Simplified climate-carbon cycle models, calibrated against complex ESMs and often used in IAMs for scenario generation are capable of reproducing this behaviour at a global scale. This means that existing IAMs are not systematically wrong in their estimates of NETs required within scenarios. However, large uncertainty remains, due primarily to model spread in the simulation of future carbon sinks and this hinders robust determination of carbon budgets to meet climate targets.

ESMs still lack some important processes such as the role of nutrient cycles that may limit future land carbon storage (Zaehle *et al* 2015), burning of old land carbon stocks (e.g. peat fires in Indonesia, Lestari *et al* 2014) or release of carbon from thawing permafrost (Schoor *et al* 2015). The latter in particular has potentially significant impacts on the requirement for

negative emissions, as once released from thawed permafrost it would take centuries to millennia for the same carbon to re-accumulate, making it effectively irreversible on human timescales (MacDougall *et al* 2015). Uncertainty also exists on the strength and persistence of concentration-dependent carbon uptake, especially on land (so-called 'CO<sub>2</sub> fertilisation'). IPCC 5th Assessment Report assessed 'low confidence on the magnitude of future land carbon changes' (Ciais *et al* 2013). It is increasingly important to bring observational constraints to bear to reduce this uncertainty especially focusing on low emissions scenarios.

It is increasingly clear that negative emissions could be very important in achieving ambitious climate targets, and in fact many scenarios rely on them to do so. Failure to accurately account for carbon cycle feedbacks which increase the need for such negative emissions may strongly and adversely affect the feasibility of achieving these targets. We lack important understanding about the costs and implications of negative emissions, and also knowledge related to the Earth-system dynamics. It is vital to address these knowledge gaps in order to quantify the requirement for, and implications of negative emissions.

## Acknowledgments

The work of CDJ, JAL and AW was supported by the Joint UK BEIS/Defra Met Office Hadley Centre Climate Programme (GA01101). CDJ, JAL, AW, PF, EK and DvV are supported by the European Union's Horizon 2020 research and innovation programme under grant agreement No 641816 (CRESCENDO). GPP was supported by the Norwegian Research Council (project 209701). PC acknowledges support from the European Research Council Synergy grant ERC-2013-SyG-610028 IMBALANCE-P. We acknowledge the World Climate Research Programme's Working Group on Coupled Modelling, which is responsible for CMIP, and we thank the climate modeling groups (listed in table 1 of this paper) for producing and making available their model output. For CMIP the US Department of Energy's Program for Climate Model Diagnosis and Intercomparison provides coordinating support and led development of software infrastructure in partnership with the Global Organisation for Earth system Science Portals.

## References

- Benson S M *et al* 2012 *Global Energy Assessment Toward a Sustainable Future* (Cambridge: Cambridge University Press) ch 13
- Cao L and Caldeira K 2010 Atmospheric carbon dioxide removal: long-term consequences and commitment *Environ. Res. Lett.* **5** 024011
- Cherubini F, Peters G P, Bernsten T, Stromman A H and Hertwich E 2011 CO<sub>2</sub> emissions from biomass combustion for bioenergy: atmospheric decay and contribution to global warming *GCB Bioenergy* **3** 413–26

- Ciais P *et al* 2013 Carbon and other biogeochemical cycles *Climate Change 2013: The Physical Science Basis. Contribution of Working Group I to the Fifth Assessment Report of the Intergovernmental Panel on Climate Change* ed T F Stocker *et al* (Cambridge: Cambridge University Press)
- Clarke L *et al* 2014 Assessing transformation pathways *Climate Change 2014: Mitigation of Climate Change. Contribution of Working Group III to the Fifth Assessment Report of the Intergovernmental Panel on Climate Change* ed O Edenhofer *et al* (Cambridge: Cambridge University Press)
- Fuss S *et al* 2014 Betting on negative emissions *Nat. Clim. Change* **4** 850–3
- Gasser T, Guivarch C, Tachiiri K, Jones C D and Ciais P 2015 Negative emissions physically needed to keep global warming below 2 °C *Nat. Commun.* **6** 7958
- House J, Huntingford C, Knorr W, Cornell S E, Cox P M, Harris G R, Jones C D, Lowe J A and Prentice C I 2008 What do recent advances in quantifying climate and carbon cycle uncertainties mean for climate policy? *Environ. Res. Lett.* **3** 044002
- Huntingford C, Lowe J A, Booth B B B, Jones C D, Harris G R, Gohar L K and Meir P 2009 Contributions of carbon cycle uncertainty to future climate projection spread *Tellus* **61B** 355–60
- IPCC 2005 *IPCC Special Report on Carbon Dioxide Capture and Storage. Working Group III of the Intergovernmental Panel on Climate Change* ed B Metz *et al* (Cambridge: IPCC) pp 1–431
- Jones C D *et al* 2013 Twenty-first-century compatible CO<sub>2</sub> emissions and airborne fraction simulated by CMIP5 Earth system models under four representative concentration pathways *J. Clim.* **26** 4398–413
- Jones C D, Cox P M and Huntingford C 2003 Uncertainty in climate-carbon cycle projections associated with the sensitivity of soil respiration to temperature *Tellus* **55B** 642–8
- Jones C D, Cox P M and Huntingford C 2006 Climate-carbon cycle feedbacks under stabilization: uncertainty and observational constraints *Tellus* **58B** 603–13
- Lestari R K, Watanabe M, Imada Y, Shiogama H, Field R D, Takemura T and Kimoto M 2014 Increasing potential of biomass burning over Sumatra, Indonesia induced by anthropogenic tropical warming *Environ. Res. Lett.* **9** 104010
- Le Quéré C *et al* 2015 Global carbon budget 2015 *Earth Syst. Sci. Data* **7** 349–96
- MacDougall A H 2013 Reversing climate warming by artificial atmospheric carbon-dioxide removal: can a Holocene-like climate be restored? *Geophys. Res. Lett.* **40** 5480–5
- MacDougall A H, Zickfeld K, Knutti R and Matthews H D 2015 Sensitivity of carbon budgets to permafrost carbon feedbacks and non-CO<sub>2</sub> forcings *Environ. Res. Lett.* **10** 125003
- Matthews H D 2010 Can carbon cycle geoengineering be a useful complement to ambitious climate mitigation? *Carbon Manage.* **1** 135–44
- Meinshausen M *et al* 2011 The RCP greenhouse gas concentrations and their extension from 1765 to 2300 *Clim. Change* **109** 213–41
- Raupach M R 2013 The exponential eigenmodes of the carbon-climate system, and their implications for ratios of responses to forcings *Earth Syst. Dynam.* **4** 31–49
- Raupach M R, Gloor M, Sarmiento J L, Canadell J G, Frölicher T L, Gasser T, Houghton R A, Le Quéré C and Trudinger C M 2014 The declining uptake rate of atmospheric CO<sub>2</sub> by land and ocean sinks *Biogeosciences* **11** 3453–75
- Rogelj J, Luderer G, Pietzcker R C, Kriegler E, Schaeffer M, Krey V and Riahi K 2015 Energy system transformations for limiting end-of-century warming to below 1.5 °C *Nature Clim. Change* **5** 519–27
- Schuur E A G *et al* 2015 Climate change and the permafrost carbon feedback *Nature* **520** 171–9
- Smith P *et al* 2016 Biophysical and economic limits to negative CO<sub>2</sub> emissions *Nat. Clim. Change* **6** 42–50
- Tokarska K B and Zickfeld K 2015 The effectiveness of net negative carbon dioxide emissions in reversing anthropogenic climate change *Environ. Res. Lett.* **10** 094013
- UNFCCC 2015 FCCC/CP/2015/L.9/Rev.1: Adoption of the Paris Agreement. Paris, France, UNFCCC: 1–32
- van Vuuren D P *et al* 2011 The representative concentration pathways: an overview *Clim. Change* **109** 5–31
- Williamson P 2016 Scrutinize CO<sub>2</sub> removal methods *Nature* **530** 153–5
- Zaehle S, Jones C D, Houlton B, Lamarque J-F and Robertson E 2015 Nitrogen availability reduces CMIP5 projections of twenty-first-century land carbon uptake *J. Clim.* **28** 2494–511